

You must first:

Download the new application installer file from the web site.
(File is called "VCE_Express_Software_a_b_c_d.zip" where a.b.c.d represents the version number)

Download the new firmware installer file from the web site.
(File is called "VCE_Express_Firmware_a_b_c_d.zip" (for the regular card) or
"VCE_Express_Flat_Firmware_a_b_c_d.zip" (for the flat card), where a.b.c.d represents the version number).

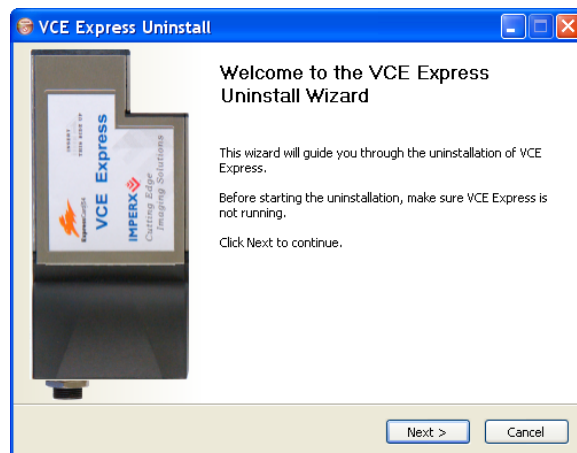
Then use the following steps to install newly released VCE Express software and firmware.

1. Remove the old application files
2. Install the new application files
3. Replace the old driver with the new driver
4. Upgrade the card with the new firmware

(Note: in the following instructions 'click' refers to the left mouse button)

1. To remove the old application files:

- 1.1 Click on "Start".
- 1.2 Click on "Settings".
- 1.3 Click on "Control Panel".
- 1.4 Double click on "Add or Remove Programs".
- 1.5 Click on "VCE Express".
- 1.6 Click on "Remove".
- 1.7 When the following message appears, click "Next" and follow the instructions.



1.8 When the message ‘VCE Express has been uninstalled from your computer.’ appears, click “*Finish*”.

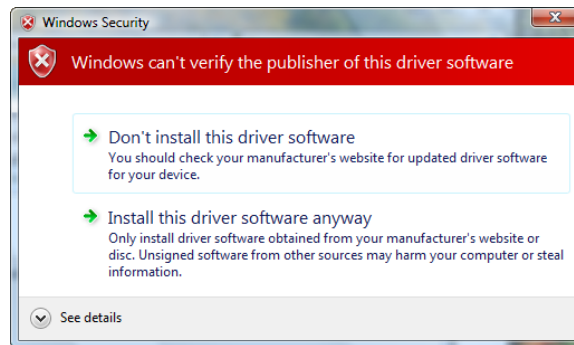
2. To install the new application files:

2.1 Unzip the file ‘VCE_Express_Software_a_b_c_d.zip’ and double click on the ‘VCE_Express_Software_a_b_c_d.exe’ file.

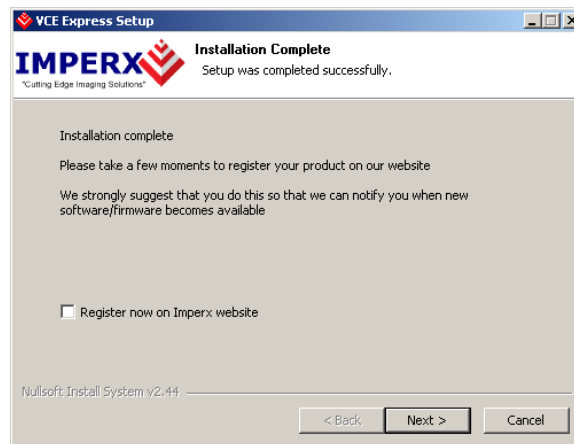
2.2 Wait for the ‘VCE Express - InstallShield Wizard’ screen to appear.

2.3 Follow the on-screen instructions.

2.4 For Vista, click on “*Install this driver software anyway*” when the following message appears:



2.5 When the following message appears, choose if you would like to register online by clicking on “*Register now*”.



2.6 Click “*Finish*”.

2.7 This completes the software installation.

3. To replace the old driver with the new driver:

3.1 Insert the VCE Express card into the laptop.

3.2 Click on “*Start*”, “*Settings*” and “*Control Panel*”.

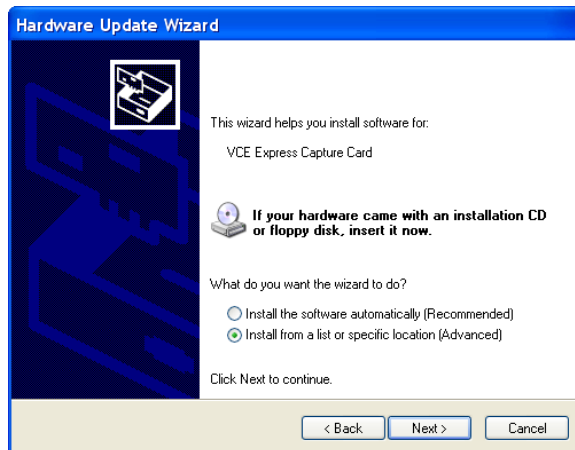
3.3 Click on “*System*”, “*Hardware*” and “*Device Manager*”.

3.4 Expand the tab that says ‘Sound, video and game controllers’.

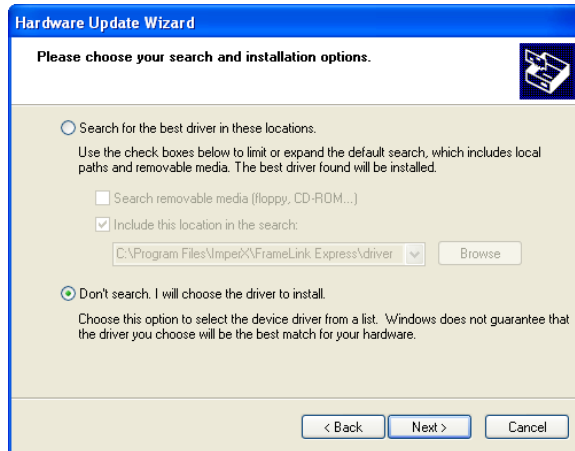
- 3.5 Right click on “VCE Express Capture Card”.
- 3.6 Click on “Update Driver...”.
- 3.7 Under certain conditions, the following message may appear. If this message appears, click “No, not this time”, then click “Next”.



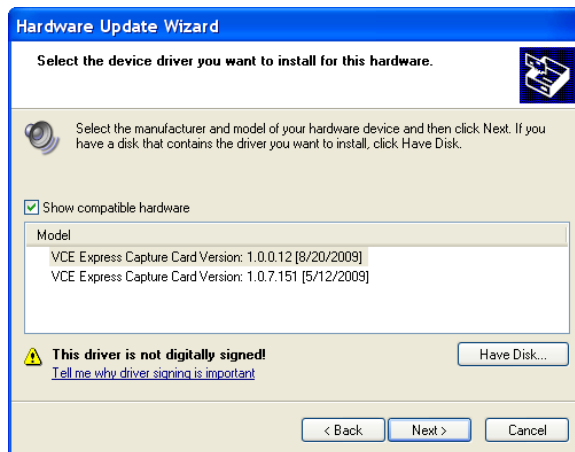
- 3.8 When the following message appears, select “Install from a list or specific location (Advanced)”, then click “Next”.



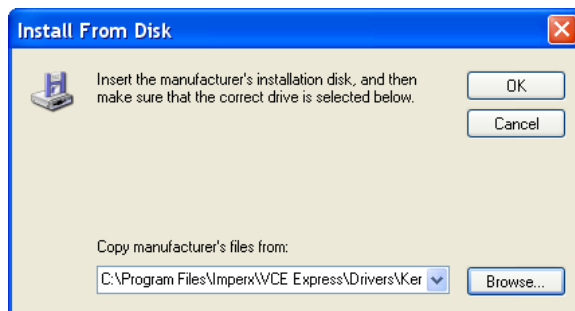
- 3.9 When the following message appears, select “Don’t search, I will choose the driver to install”, then click “Next”.



3.10 When the following message appears, click on “*Have Disk...*”.



3.11 When the following message appears, click on “*Browse...*”.

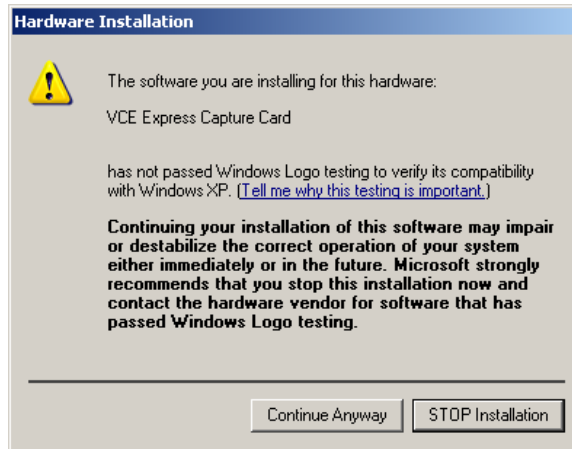


3.12 Browse to the “C:\Program Files\Imperx\VCE Express\driver” folder.

3.13 Select the “vce_ex” file.

3.14 Click on “*Open*”, then click on “*OK*” and then click on “*Next*”.

3.15 The following message will appear:



- 3.16 Click on “*Continue Anyway*”.
- 3.17 When ‘Click finish to close the wizard’ appears, click on “*Finish*”.
- 3.18 This completes the driver installation.

4. To upgrade the card with the new firmware:

- 4.1 Insert the VCE Express card into the laptop.
- 4.2 Unzip the file ‘VCE_Express_Firmware_a_b_c_d.zip’ (for the regular card) or ‘VCE_Express_Flat_Firmware_a_b_c_d.zip’ (for the flat card) and double click on the .exe file.
- 4.3 Click on “*Start*”.
- 4.4 When the message ‘Resetting....done’ appears, click on “*Exit*”.

Important notes:

Do not interrupt the firmware upgrade process!

Do not remove the card during firmware upgrade!

Do not reboot the PC during firmware upgrade!

If the firmware upgrade fails, then click on “*Exit*” and repeat from step 4.2

- 4.5 This completes the firmware upgrade.
- 4.6 Reboot the PC.