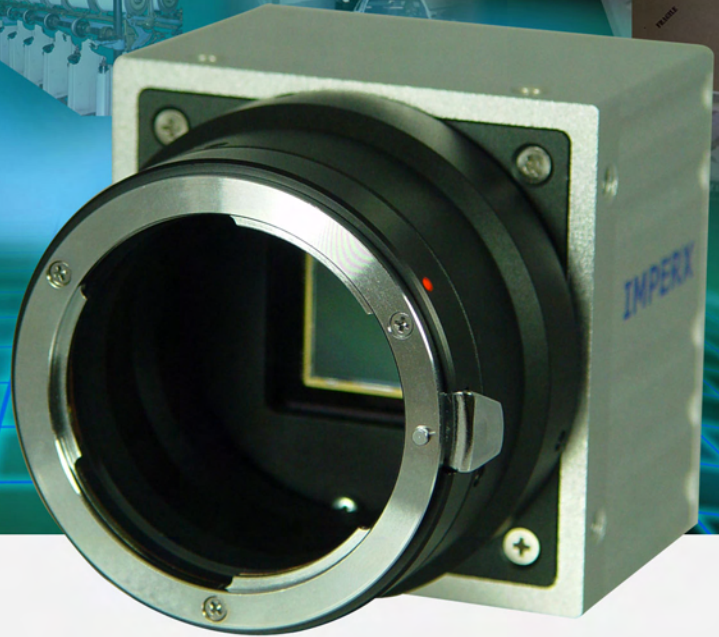


4 MEGA-PIXEL 8/10/12 BIT, 15 FPS, PROGRAMMABLE DIGITAL CAMERA

IPX-4M15-L



Features

- 2048 x 2048 pixels @ 15 fps
- Mono or Color
- 8/10/12 bit data, Base Camera Link
- Single or Dual tap operation
- RS232 serial communication
- 32 bit RISC processor
- Horizontal and vertical binning
- Highly programmable:
 - resolution • frame rate
 - electronic shutter • long integration
 - external trigger • pre-exposure
 - fast triggering • double exposure
 - strobe output • gain and offset
 - area of interest • user LUT
- Dynamic Transfer Function correction
- Dynamic S/N correction
- Temperature monitor
- Field upgradeable:
 - software • firmware • user LUT
- Automatic Iris Control - optional

Applications

- Medical and Scientific Imaging
- Machine Vision and Metrology
- Microscopy
- Remote Sensing
- Surveillance

The **IPX-4M15-L** is an advanced, high-resolution progressive scan, fully programmable and field upgradeable CCD camera, built around KODAK's KAI-4022 interline transfer CCD. The camera provides 2048 x 2048 resolution and delivers 15 frames per second at full resolution. The camera image processing engine is based on a 1 million gate FPGA and 32 bit RISC processor, featuring programmable resolution, AOI, binning, triggering, shutter, long integration, transfer function correction and user LUT.

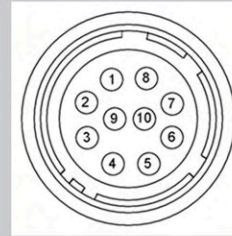
FAST...SMART...FLEXIBLE...
LYNX FAMILY



Specifications for IPX-4M15-L

Active Image Pixels	2048 (H) x 2048 (V), Mono or Color
Active Image Area	16.67 mm x 16.05 mm (0.656" x 0.632")
Pixel size	7.4 um
Video Output	Digital, 8/10/12 bit, one or two outputs
Camera Interface	Base Camera Link
Data Clock	40.000 MHz
Resolution	2048 x 2048 pixels max
Frame Rate	15 fps (dual) / 7.5 fps (single), up to 118 fps w/AOI
Shutter Speed	1/30000 sec to 1/7 sec
Long Integration	1/7 sec to 10 sec
Gamma Correction	G=1.0, G=0.45, User defined LUT
Black Level Offset	256 levels/output
Video Gain	6-40 dB, 1024 steps/output
External Trigger	Asynchronous
Hardware Trigger	External, level sensitive, 3.3V - 5.0V, 10 mA., optically isolated, programmable exposure
Software Trigger	Frame-grabber, CC1, programmable exposure
S/N Ratio	60 dB
Strobe Output	Active HIGH, for external light source
Lens Mount	F mount, 21.43 mm image diagonal
Environmental	Operating: -5 to 50 C, Storage: -10 to 65 C
Min. Illumination	1.0 Lux, f=1.4, no IR cut filter, no shutter
Mechanical	(67 x 67 x 47) mm; 13 oz (360 g)

Power Connector



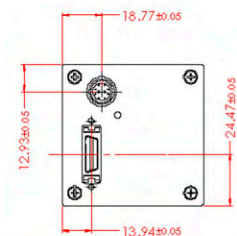
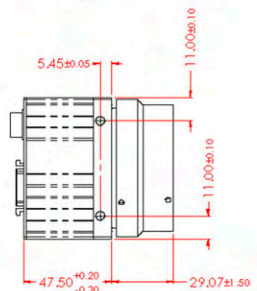
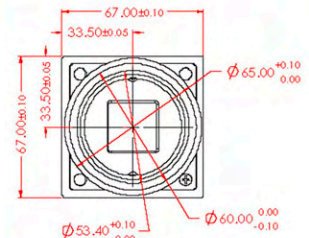
Rear Camera View

- 1 Trigger IN -
- 2 Trigger IN +
- 3 -12 VDC
- 4 -12 VDC
- 5 +12 VDC
- 6 +12 VDC
- 7 Strobe OUT -
- 8 Strobe OUT +
- 9 Auto Iris +
- 10 Auto Iris -

Power Requirements

- 12V DC, (10V min, 15V max)
- 430 mA steady, 1.5 A inrush
- 5.1 W constant power
- Connector: Hirose HR 10A-10R-10P

Mechanical Dimensions



Ordering: IPX-4M15-LMCI

Camera Family

L - LYNX Family

Sensor Type

M - Monochrome
 C - Color
 U - UV sensitive (no glass)
 S - Special - user filter

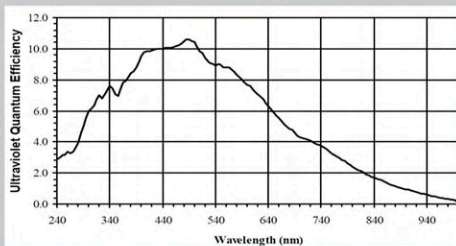
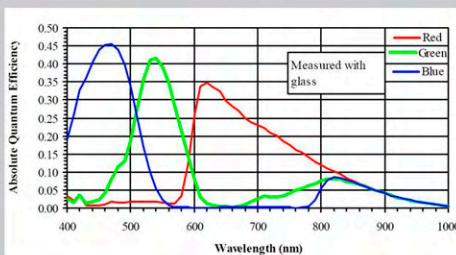
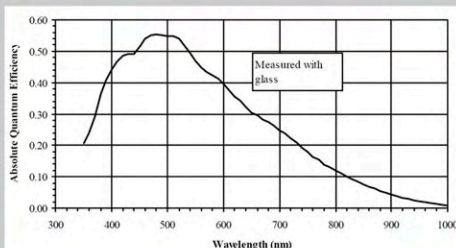
Options

blank - none
 I - Auto Iris

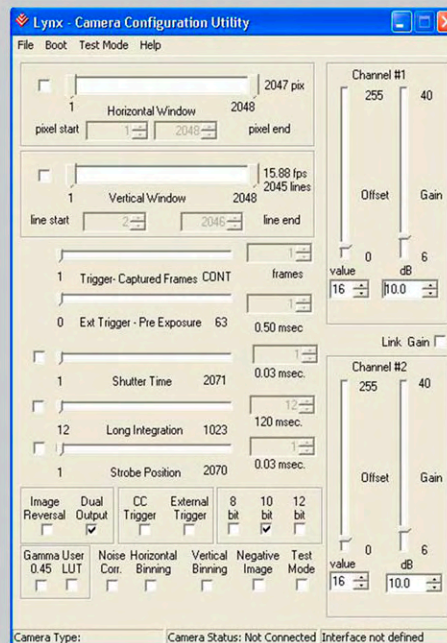
Lens Mount

blank - "F" mount
 (default)
 C - "C" mount
 O - Open frame

Spectral Response



Configuration Utility



- CameraLink protocol compliant
- Control all camera features via:
 - our intuitive, easy-to-use GUI, or
 - simple ASCII commands

For specific details and ordering information, consult the camera user's manual or contact us at sales@imperx.com.

Copyright © 2004, Imperx, Inc. Product information subject to change without notice.

Rev. 1.0, 11/08/04



Imperx Incorporated • 6421 Congress Avenue • Boca Raton, FL 33487 • USA
 Phone: 1-561-989-0006 • 1-866-849-1662 • Fax: 1-561-989-0045
www.imperx.com • sales@imperx.com



Made in USA