

IMPERX

EIPVR: EtherNET/IP™ Process Video Recorder Second Generation



Camera image supplied may not reflect actual dimensions or mount for this model. Refer to mechanical dimensions and ordering information on reverse side.

See the problem, fix the problem.
Reduce downtime and eliminate guesswork.

Imagine having the ability to see the events before and after a process failure in slow motion from your office, your home, or wherever business takes you! The EtherNet/IP™ Process Video Recorder (EIPVR) is self-contained and embeds into a production line, seamlessly interfacing with your PLC or plant floor computers to capture high speed video of your process and machinery.

Leveraging off open standards, the EtherNet/IP™ PVR starts with ruggedized high speed Power over Ethernet (PoE) camera systems which continuously record video at up to 250 frames per second. Upon receipt of an EtherNet/IP™ trigger, an AVI/MPEG-4 file is created and loaded onto a mapped network drive for easy access via your plant floor or remote PC. With the EIPVR, you can conveniently collaborate with experts world-wide quickly driving to root cause and resolving system failures.

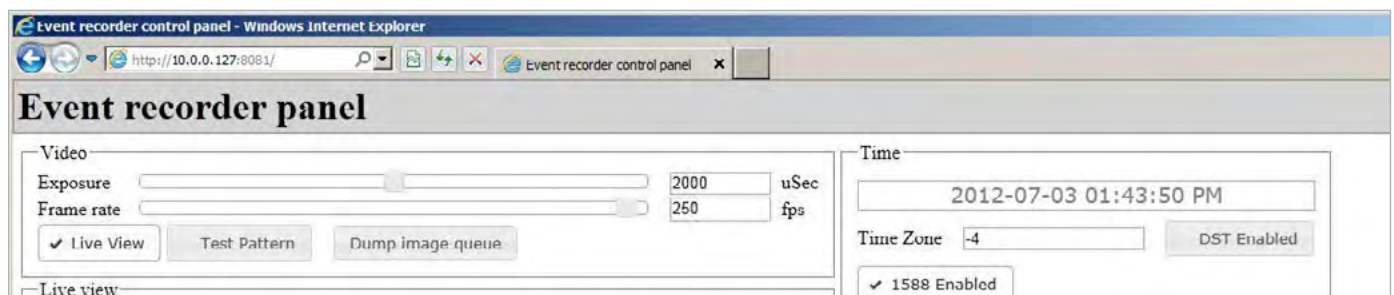
- supports up to 4 cameras recording simultaneously
- in either monochrome or color

Process Video Recorder



PVR Configuration

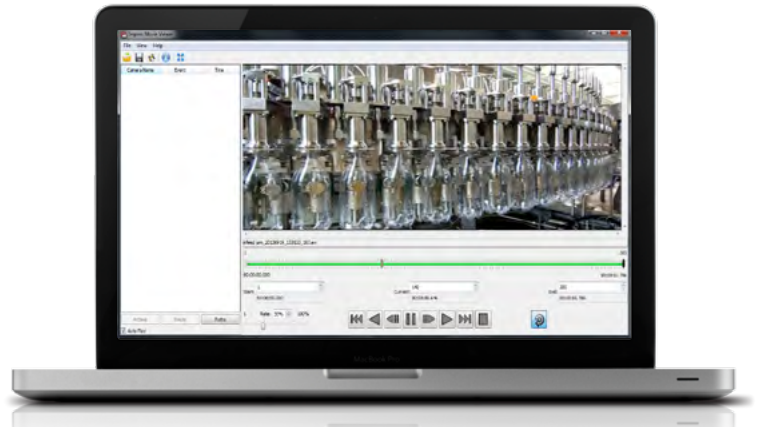
Configuration is easy. Just use your favorite web browser to access the PVR's built-in web server. From there you can view live video or adjust parameters such as exposure, frame rate, and the shared drive path.



Event Analysis

Our comprehensive, yet easy-to-use, view utility allows the user to view recorded events with:

- User configurable playback speed
- Ability to crop video and save shorter video clips
- Ability to add bookmarks with user notes
- Automatically polls the video server for new videos
- ActiveX controls included



EIPVR Specification

	Description
Recording	Records up to 60 seconds of video at 250 frames per second (fps) with user specified pre and post trigger duration. Longer recording durations possible at slower frame rates. Upon receipt of EtherNet/IP™ trigger, an AVI/MPEG-4 file is created on a shared drive path AVI file can be a subset of the 60 second video buffer
Trigger	EtherNet/IP™ command containing the start and duration of recording using IEEE 1588 or relative time
Configuration Parameters	Frame rate, exposure, shared drive path, AVI or MPEG-4 file format
Camera	IMPERX monochrome progressive scan CCD, VGA (648 x 488), 250 fps, C-mount, Power over Ethernet (PoE). Can be located up to 100 m from controller using Cat6 cable. Operating Temp: -40°C to +85°C; Storage Temp: -50°C to +90°C
EIPVR Controller	Four PoE Gigabit Ethernet ports for cameras and two standard Gigabit Ethernet ports. Dimensions: (W x D x H): 260 x 150 x 68 mm (10.24" x 5.90" x 2.68") Input power: 24 VDC Operating Temperature: 0°C to +50°C
Optional Camera Enclosure	Standard Protection: Aluminum enclosure, 70 mm diameter x 15 mm. Accommodates LED ring light. IP67 Protection: Available upon request
Optional LED Ring Light	90 mm diameter, white LEDs, PoE Interface (able to power ring light & camera with a single Cat5e or Cat6 cable). Other LED wavelengths upon request.

EIPVR Ordering Information

	Category	Manufacturer Part Number	Description
Main Models	EtherNet/IP™ Process Video Recorder	EIPVRCTRL4	EIPVR controller with support for up to four (4) cameras w/ AC Power
		EIPVRCAM	Event Recorder & Viewer Software, camera, 8mm lens
Ordering Options	Enclosures	ELC-A11AP0-AB000	Aluminum enclosure & LED ring light combination, sliding lens adjustment, PoE interface, two mounting brackets
		ENC-A11LP0-SB000	Aluminum enclosure, 70 mm diameter x 15 mm. Accommodates LED ring light. Includes two (2) mounting brackets
	LED Ring Light	LED-R090W0-GM000	LED ring light, 90 mm, white LEDs, PoE interface
	GigE Cables	GET-2	GigE cable, RJ45 to RJ45 thumbscrew, 2 m
		GET-30	GigE cable, RJ45 to RJ45 thumbscrew, 30 m
		GET-50	GigE cable, RJ45 to RJ45 thumbscrew, 50 m
			Other lengths available upon request
	Lenses	NCN38014	8 mm lens, f1.4-1.6, M27xP0.5
		NCN31214	12 mm lens, f1.4-1.6, M27xP0.5
			We offer fixed focal length lenses from 3.5 mm to 100 mm
NCZ85900		Manual zoom lens, 8.5-90 mm, F2.5-close, M48 x P0.75	
		Motorized zoom lenses (iris, focus, zoom) available as an option	
Regulation	FCC, CE Certification		

Imperx, Inc. has been assessed and certified as meeting the requirements of ISO: 9001:2008 and ISO: 14001: 2004

WWW.IMPERX.COM

For more information, please contact us at +1-561-989-0006 or at sales@imperx.com



North Coast Technical, Inc
8761 Mayfield Rd, Suite 302
Chesterland, OH 44026
Phone: (440) 729-7540
Email: sales@nctechnical.com
Authorized Automation Distributor
<http://www.nctechnical.com/>

