

IMPERX

LED Ring Light

Power from External DC Input



Imperx: *LED DC Power*

The Imperx LED Ring Light with External DC Input provides brighter LED intensity than the PoE ring light. The LED ring light offers a choice of LED color and provides consistent and controlled illumination, enabling use of faster frame rates and a broad range of apertures to achieve optimal image quality. The DC version is powered externally through a 6-pin connector and allows local and remote control of intensity. Users can provide their own 24 V power supply or purchase one from Imperx (PS24V01). The LED ring light has internal circuit that provides 12 VDC for powering the attached camera.

Specifications

Feature	Description
General	LED Ring Light with DC power input
Lighting Colors	Standard – White Cool Custom – White Neutral, Blue, Gree, Red, IR, UV
Strobe Input	TTL and open collector (NPN) compatible
Signal Compatibility	DC to 10kHz (PWM mode), active low (off)
Operating Modes	Continuous, strobe or PWM dimming
Camera Compatibility	Any Cheetah or Bobcat C-mount cameras (except for CXP-C4540, CXP-C5340, CXP-C5341). Cameras have built-in PWM Control
Local Control	Rotary switch, adjustable from 20% to 100% (15 steps)
Remote Control	Strobe/PWM input for 0 to 100% dimming
Peak Light Intensity	20,000 lux @ .3m, 15,000 lux @ .5m
Working Distance	0.5m to 5m
Connectors	Weidmüller OMNIMATE B2L 3.50F 6-pin
IP Rating	IP50
Housing Material	Aluminum
Operation Temperature	-20°C to +50°C
Storage Temperature	-20°C to +70°C
Outside Dimensions	98 mm diameter x 38mm deep
Inside Opening Dimensions	46.3 mm diameter
Weight	285g
Camera Power Output	12VDC (+/- .5V) @ 1A maximum
Electrical Input	24VDC (30W - 50W power supply recommended)
Current	1.0A@24VDC (typ.)
Regulatory	CE, FCC

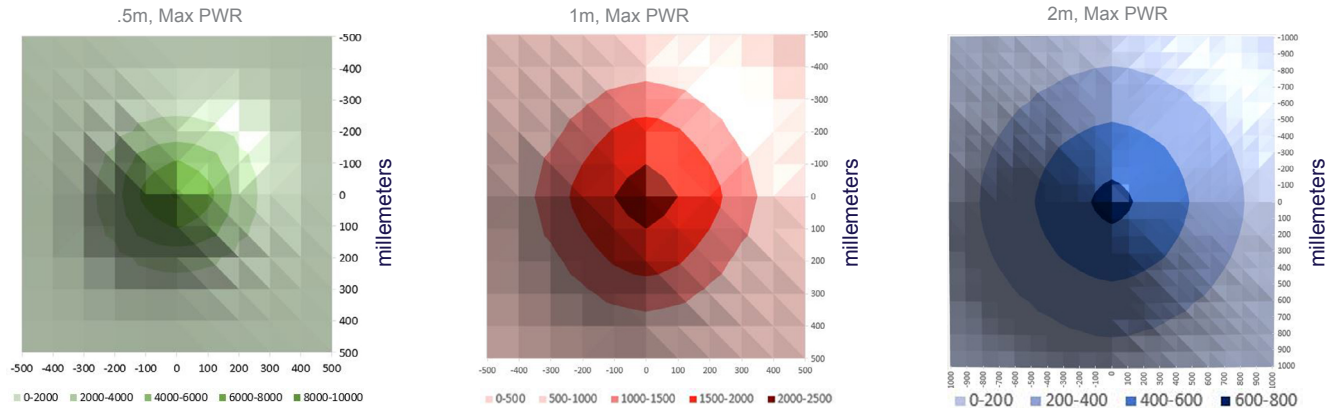
Non-PoE LED Ring Light Mounting Option with Camera



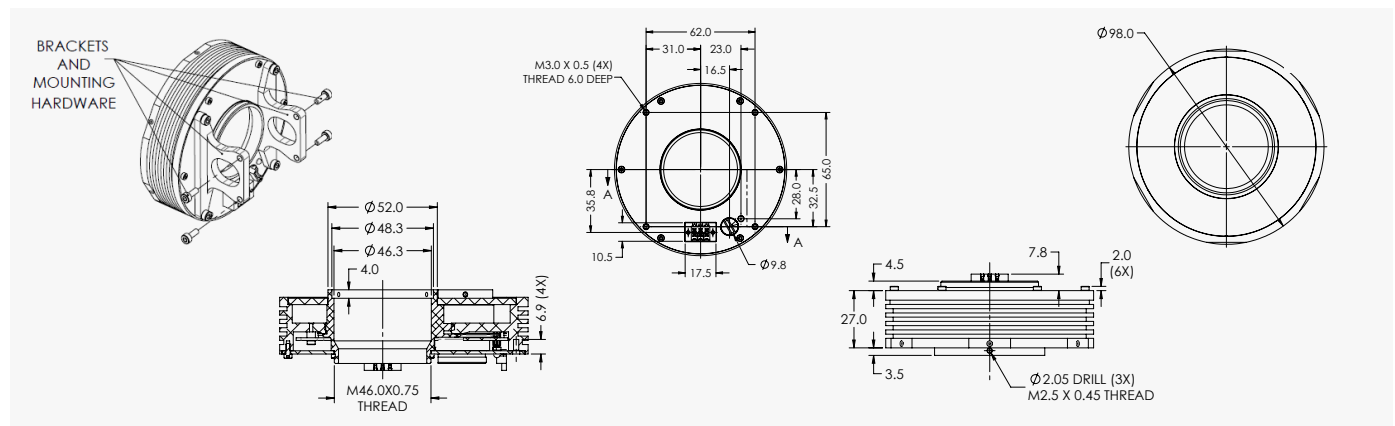
Imperx: LED Non-PoE Ring Light Applications

Controlled light pattern • Special wavelength light • Dynamic capability • fast on/off or level changes • Light synchronized to camera (strobe) • Efficient LEDs for lower power dissipation and long life • Compact light source • More stable illumination (time and temperature) • Highly variable output

Light Distribution



Dimensions

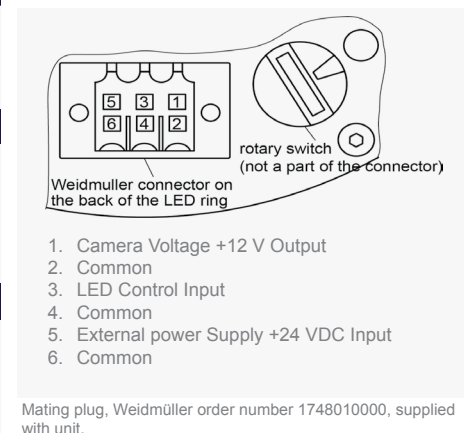


Ordering Information

LED Color Spectrum Available	
Code:	Description:
WC	White Cool (5600K) (standard)
WN	White Neutral (4100K)*
BB	Blue (470.0 nm)*
GG	Green (530.0 nm)*
RR	Red (627 nm)*
IR	Infrared (850.0 nm)* (wide [no lens] only)
UW	Ultraviolet (365.0 nm)* (wide [no lens] only)
* custom lighting colors	
Diffuser	
0	Matte (Standard)
1	Clear
2	Matte/Clear Camera Protection Filter
3	Clear/Clear Camera Protection Filter

LED Lens Angle	
Code:	Description:
M	Medium (standard)
W	Wide (no lens)
Ordering Example	
LED-100WC-PM000 (LED Ring Light)	
WC = LED Color, white cool	
M = LED Lens Angle, standard	
0 = Diffuser, matte	
Accessories	
PS24V01 Power Supply (24VDC, 2.0A, 2-meter able length)	
Kit-Mount-LRP - for Imperx Bobcat cameras	
Kit-Mount-LRP1 - for Imperx Cheetah cameras	
* All mounting kits include mounting brackets & screws.	
** Use with non-Imperx cameras requires modification.	

Weidmüller OMNIMATE B2L 3.50F 6-pin Connector



IMPERX 

Industrial Cameras & Imaging Systems

IMPERX 6421 Congress Ave., Boca Raton, FL 33487, USA
Tel: +1-561-989-0006. Email: sales@imperx.com

WWW.IMPERX.COM

Rev: led_ring_light_dc_r4_2022

Quality Management System ISO 9001:2015 Registered
Environmental Management System ISO 14001:2015 Registered
DDTC Registered (Directorate of Defense Trade Controls, US Department of State)

Technical data has been fully checked, but accuracy of printed matter is not guaranteed. Subject to change without notice. Copyright 2022.