

BOBCAT

INTELLIGENT CAMERA SERIES

ICL-B1320



IMPERX ICL-B1320 is an advanced progressive scan, fully programmable CCD camera designed for imaging applications that require high quality images, powerful features and flexibility. The camera is small, light weight, and built around TRUESENSE Imaging's KAI-01150 5.5 micron interline transfer CCD image sensor with a 1/2" optical format.

IMPERX ICL-B1320 provides an image resolution of 1320 x 736 and delivers up to 85 frames per second at full resolution. The camera's 14 bit internal data image processing engine is based on an industrial grade high-speed, high-density FPGA, enabling a broad standard feature set and easy implementation of demanding custom imaging solutions. The thermally optimized, mechanical and electrical design plus the extended operating temperature range (-40°C to +85°C), and high MTBF of 660,000 hours @ 40C, make this Camera Link® camera a perfect fit for the most demanding industrial, medical, scientific and military applications. This camera is also available with CoaXPress or GigE Vision® interfaces.

Features

1320/1280 x 736/720

Mono, color, or TRUESENSE Sparse CFA 8, 10, 12 bit single or dual output (14 bit is single only)

Normal and over-clock operation (68/85 fps)

Base Camera Link

RS232 serial communication

Analog and digital gain and offset control

1x, 2x, 3x, 4x, 8x horizontal and vertical binning

Eight (8) independent horizontal and vertical AOIs

Programmable horizontal and vertical resolution

Programmable line time, frame time and speed

Programmable external trigger

Internal/External exposure control

Standard, fast, frame accumulation, double and asynchronous triggering modes

Automatic gain, exposure and iris control

Automatic white balance

Internal/External H and V sync input/output

Left/right digital bit shift

Test image with image superimposition

Built in pulse generator

Programmable I/O mapping

Dynamic transfer function correction

Dynamic black level correction

Defective and hot pixel correction (static/dynamic)

Temperature monitor

Field upgradeable firmware

Customer defined Look Up Table (LUT)

Two dimensional Flat Field Correction (optional)

Reverse image (H mirror)

MTBF of 660,000 hours @ 40°C

APPLICATIONS

Aerial Mapping

Aerial Robots: Military, Police

Aerospace

Agriculture

Automation

Automotive

Biometrics

Broadcasting

Printed Circuit Board (PCB)

Electronics

Energy/Solar/Wind Power

Flat Panel Inspection

Food/Beverage

Homeland Security

Law Enforcement

Intelligent Traffic Systems (ITS)

Medical Devices/Imaging

Metrology

Microscopy

Military/Defense

Pharmaceuticals

Particle Image Velocimetry (PIV)

Radiology

Robotics

Scientific Apps

Surveillance

Semiconductors

Transportation

Textile/Apparel

IMPERX

BOBCAT ICL-B1320 Specifications

Maximum Resolution	1320 x 736
Sensor Type	KAI-01150, CCD, 1/2" optical format
Pixel Size	5.50 μ m
Frame Rate	68/85 fps (normal/overclock)
Max Frame Rate	395 FPS
Minimum S/N ratio	60 db
Video Output	Base Camera Link, mini CL interface, PoCL
Output Format	Mono, color, or TRUESENSE Sparse 8, 10, 12 bit single or dual output (14 bit is single only)
Binning H & V	x1, x2, x3, x4, x8
Area of Interest	8 independent AOIs, 2 x 2 to 1320 x 736
Shutter Speed	1/250,000 to 1/68 sec (nom)
Long Integration	Up to 16 sec
Gamma Correction	G=1.0, G= 0.45, user upgradable LUT
Video Gain	36 dB range, 1024 steps, 0.0351 dB per step
Exposure and AGC	Manual, Auto, Programmable
Iris Control	Auto, Programmable
Strobe Output	Programmable position and duration
Image Overlay	Yes, Programmable
RS232 Interface	Yes

Data Corrections
Hardware Trigger

Software Trigger

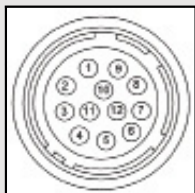
Trigger Modes

Min. Illumination
Supply Input Range
Power Consumption
Size (W x H x L)
Weight
Lens Mount
Vibration, Shock
Environmental

Humidity
MTBF
Regulatory

DPC, HPC, LUT, FFC
LVTTTL or TTL via IN1/IN2, level, edge, pulse-width, programmable
Software internal, level, edge, pulse-width, programmable
Programmable, standard, double exposure, fast, frame accumulation, asynchronous
1 Lux, F/1.4
12 VDC, (10V min, 15V max)
3.0 W, 250 mA steady, 1.5 A inrush
46 x 46 x 50.6mm
186g
C-Mount
10G (20 - 200) Hz XYZ, 70G
Operation (-40° to +85°)C
Storage (-40° to +90°)C
10% to 90% non-condensing
660,000 hours @ 40°C
FCC 15 part A, CE, RoHS

Power and I/O Interface:



1	12V DC Return	7	OUT1 Signal
2	+12V DC	8	IN1 Signal
3	IRIS VCC	9	IN2 Signal
4	IRIS Video	10	IN1/2 Return
5	IRIS Return	11	Reserved
6	OUT1/2 Return	12	OUT2 Signal

Connector: Hirose HR 10A-10R-12PB(71)

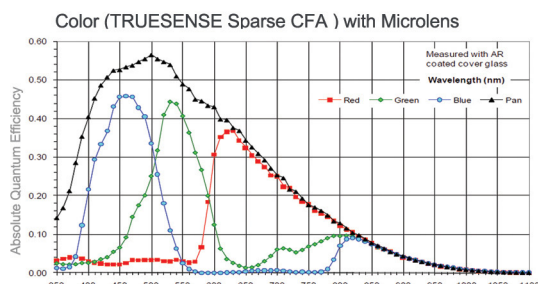
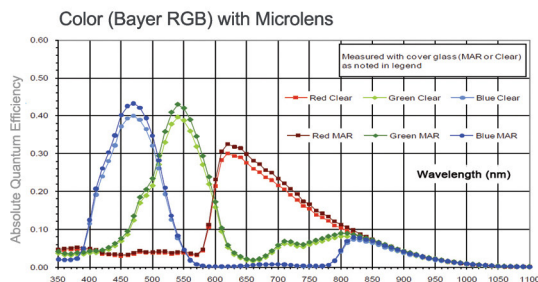
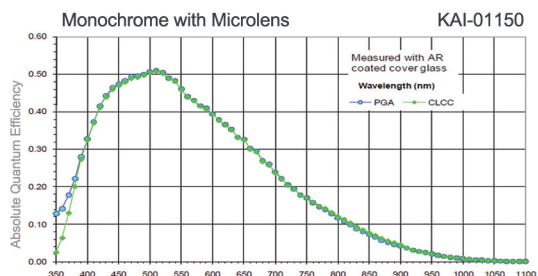
Order Options:

ICL-B1320M-TCO Monochrome CameraLink Output
ICL-B1320C-TCO Color CameraLink Output
ICL-B1320T-TCO TRUESENSE Sparse CFA CameraLink Output
For specific details and ordering information, consult the camera user's manual or contact IMPERX at sales@imperx.com.

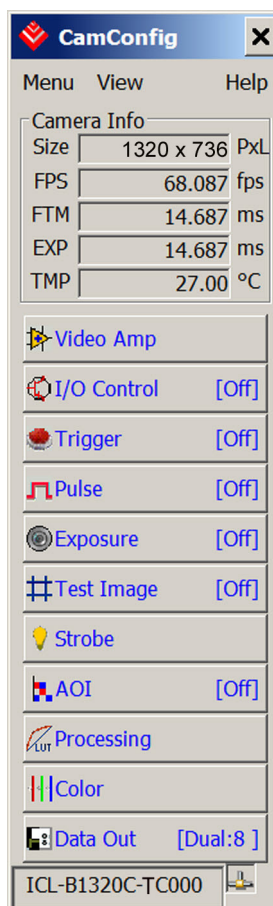
Accessories:

PS12V04: Power Supply (sold separately)

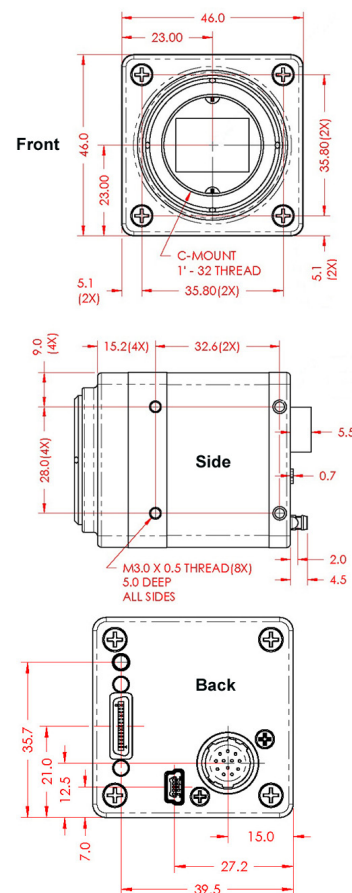
Spectral Response



Software/Drivers/Interface



Mechanical Dimensions



IMPERX | 6421 Congress Avenue | Boca Raton | FL 33487 | USA
Phone: +1-561-989-0006 | 1-866-849-1662 | Fax: +1-561-989-0045
www.imperx.com | sales@imperx.com

Copyright © 2013. IMPERX product information is subject to change without notice.

