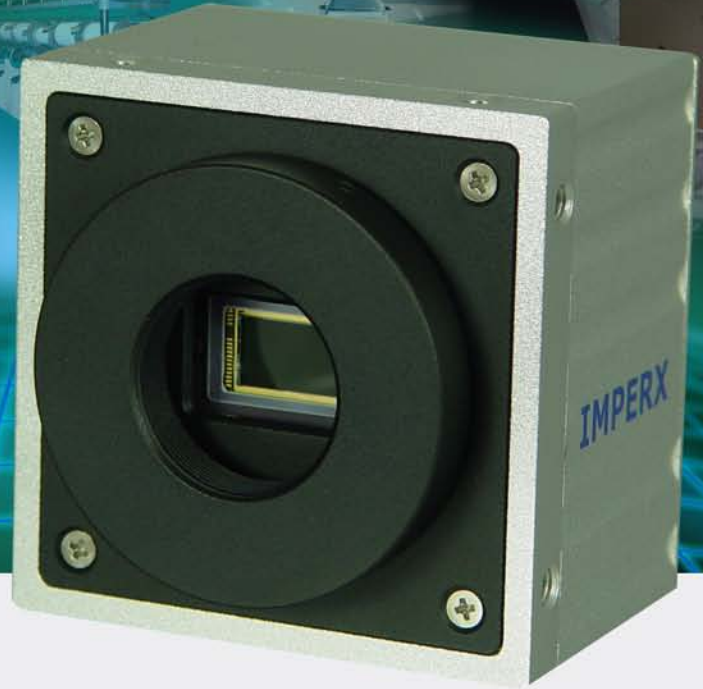


2 MEGA-PIXEL HD 8/10/12 BIT, 33 FPS, PROGRAMMABLE DIGITAL CAMERA

IPX-2M30H-L



Features

- 1920 x 1080 pixels @ 33 fps
- 8/10/12 bit data, Base Camera Link
- Single or Dual tap operation
- RS232 serial communication
- 32 bit RISC processor
- Horizontal and vertical binning
- Highly programmable:
 - resolution • frame rate
 - electronic shutter • long integration
 - external trigger • pre-exposure
 - fast triggering • double exposure
 - strobe output • gain and offset
 - area of interest • user LUT
- Dynamic Transfer Function correction
- Dynamic S/N correction
- Temperature monitor
- Field upgradeable:
 - software • firmware • user LUT
- Automatic Iris Control - optional

Applications

- Medical and Scientific Imaging
- Machine Vision and Metrology
- Microscopy
- Remote Sensing
- Surveillance

The **IPX-2M30H-L** is an advanced, high-resolution progressive scan, fully programmable and field upgradeable CCD camera, built around KODAK's KAI-2093 interline transfer CCD. The camera provides 1920 x 1080 resolution and delivers 33 frames per second at full resolution. The camera image processing engine is based on a 1 million gate FPGA and 32 bit RISC processor, featuring programmable resolution, AOI, binning, triggering, shutter, long integration, transfer function correction and user LUT.

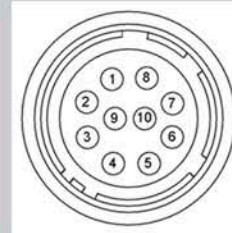
FAST...SMART...FLEXIBLE...
LYNX FAMILY



Specifications for IPX-2M30H-L

Active Image Pixels	1920 (H) x 1080 (V)
Active Image Area	15.90 mm x 8.61 mm (0.626" x 0.339")
Pixel size	7.4 um
Video Output	Digital, 8/10/12 bit, one or two outputs
Camera Interface	Base Camera Link
Data Clock	40.000 MHz
Resolution	1920 x 1080 pixels max
Frame Rate	33 fps (dual) / 15 fps (single), up to 60 fps w/AOI
Shutter Speed	1/35000 sec to 1/15 sec
Long Integration	1/15 sec to 10 sec
Gamma Correction	G=1.0, G=0.45, User defined LUT
Black Level Offset	256 levels/output
Video Gain	6-40 dB, 1024 steps/output
External Trigger	Asynchronous
Hardware Trigger	External, level sensitive, 3.3V - 5.0V, 10mA., optically isolated, 0 to 30 msec. pre-exposure
Software Trigger	Frame-grabber via CC1, programmable pre-exposure
S/N Ratio	60 dB
Strobe Output	Active HIGH, for external light source
Lens Mount	C mount, 1" format
Environmental	Operating: 0 to 50 C, Storage: -10 to 65 C
Min. Illumination	1.0 Lux, f=1.4, no IR cut filter, no shutter

Power Connector



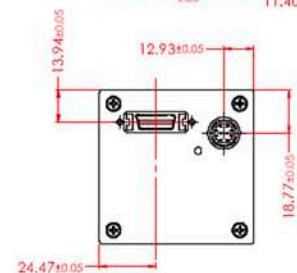
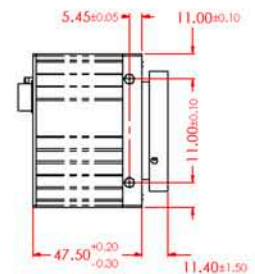
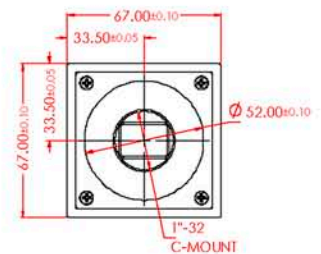
Rear Camera View

- 1 Trigger IN -
- 2 Trigger IN +
- 3 -12 VDC
- 4 -12 VDC
- 5 +12 VDC
- 6 +12 VDC
- 7 Strobe OUT -
- 8 Strobe OUT +
- 9 Auto Iris +
- 10 Auto Iris -

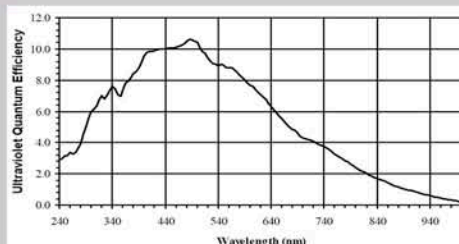
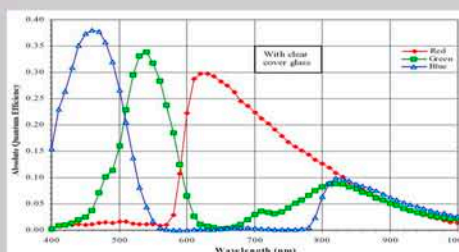
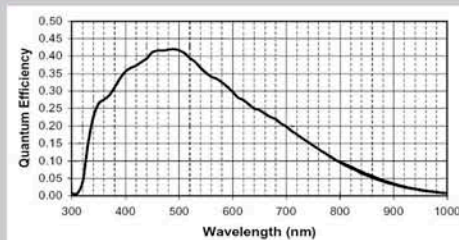
Power Requirements

- 12V DC, (10V min, 15V max)
- 400 mA steady, 1.5 A inrush
- 4.8 W constant power
- Connector: Hirose HR 10A-10R-10P

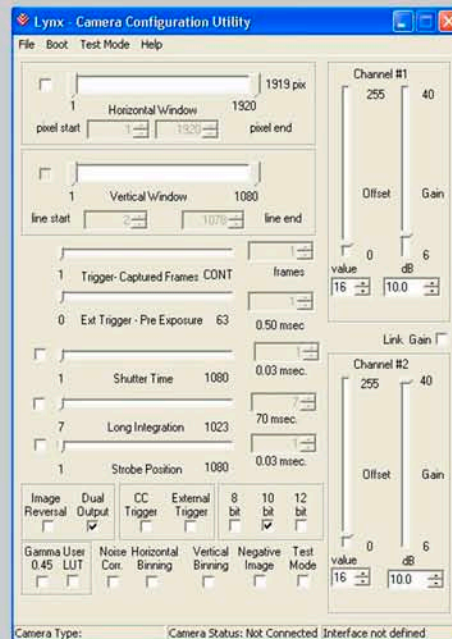
Mechanical Dimensions



Spectral Response



Configuration Utility



- CameraLink protocol compliant
- Control all camera features via:
 - our intuitive, easy-to-use GUI, or
 - simple ASCII commands

Ordering: IPX-2M30H-LMCI

Camera Family	Options
L - LYNX Family	blank - none
Sensor Type	I - Auto Iris
M - Monochrome	Lens Mount
C - Color	blank - "C" mount (default)
U - UV sensitive (no glass)	F - "F" mount
S - Special - user filter	O - Open frame

For specific details and ordering information, consult the camera user's manual or contact us at sales@imperx.com.

Copyright © 2004, Imperx, Inc. Product information subject to change without notice.

Rev. 1.0, 11/08/04



Imperx Incorporated • 6421 Congress Avenue • Boca Raton, FL 33487 • USA
 Phone: 1-561-989-0006 • 1-866-849-1662 • Fax: 1-561-989-0045
www.imperx.com • sales@imperx.com

Made in USA