

Use the following steps to install the BobCat GEV software supplied on a CD. Note that 'click' refers to the left mouse button.

1. If a version of BobCat GEV Software was previously installed on this machine, then you must first remove it:

To remove the application files:

- 1.1 Click on "Start".
- 1.2 Click on "Settings".
- 1.3 Click on "Control Panel".
- 1.4 Double click on "Add or Remove Programs" for Windows XP or "Programs and Features" for Windows Vista and Windows 7.
- 1.5 Click on "BobCat GEV".
- 1.6 Click on "Remove".
- 1.7 If the 'BobCat GEV Installer – InstallShield Wizard' pops-up then do the following, otherwise go to step 1.8:
 - Click on "Remove".
 - Click "Next".
 - Click "Yes".
 - Click "Finish".
- 1.8 Click on "Yes".
- 1.9 Click on "Close".

2. After having removed a previous version or if a version of BobCat GEV Software was NOT previously installed on this machine then:

The first step is to install the application files:

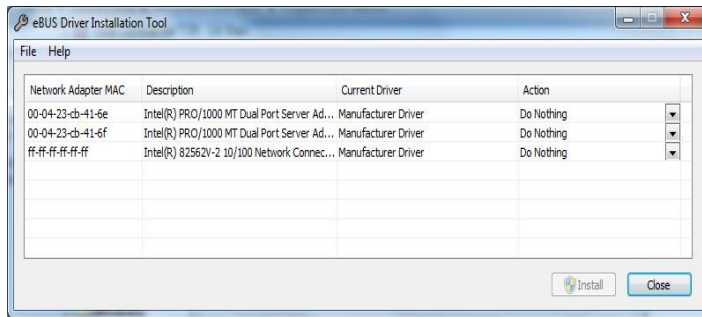
- 2.1 Insert the BobCat GEV Software CD into the appropriate drive; the Bobcat_GEV_x_x_x_xx.exe file will run automatically (where x_x_x_xx is the version number). Note: If it does not start automatically, click on "Start", "Run", enter or browse to "(CD drive): Bobcat_GEV_x_x_x_xx.exe" and click "OK".
- 2.2 Wait for the "BobCat GEV Installer - InstallShield Wizard" screen to appear.



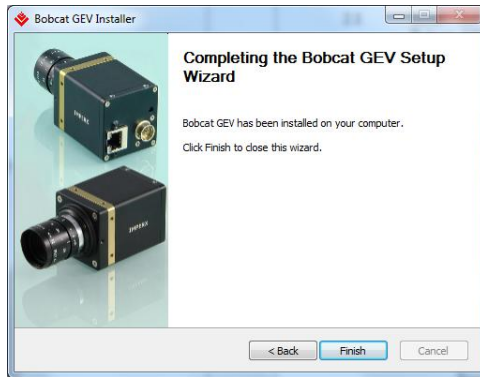
- 2.3 Follow the on-screen instructions.



- 2.4 **Important note:** When the eBus installation tool dialog appears. Select the “Action” pull-down list for the NIC card/cards and choose “Do Nothing” for all of them. Click “Close” to cancel.



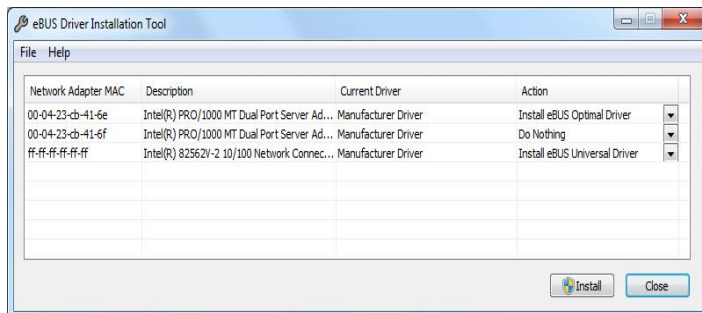
- 2.5 Click “Finish”. This completes the software installation.



- 2.6 Reboot your computer.

3. After rebooting eBus Driver must be installed.

- 3.1 Click on “Start”, “Programs”, “Imperx”, “Bobcat GEV”, “eBus Driver Installation Tool”.
- 3.2 Select the “Action” pull-down list for the NIC card that you wish to use.
- 3.3 For an Intel PRO1000 NIC card, choose the “eBus Optimal Driver” option.
For a standard NIC card, choose the “eBus Universal Driver” option.



- 3.4 Click “Install”.
- 3.5 Click “Continue Anyway” to any Driver Signing dialogs that appear.
- 3.6 Click “Close”.

For additional information and the latest updates and downloads, please visit our website at www.imperx.com