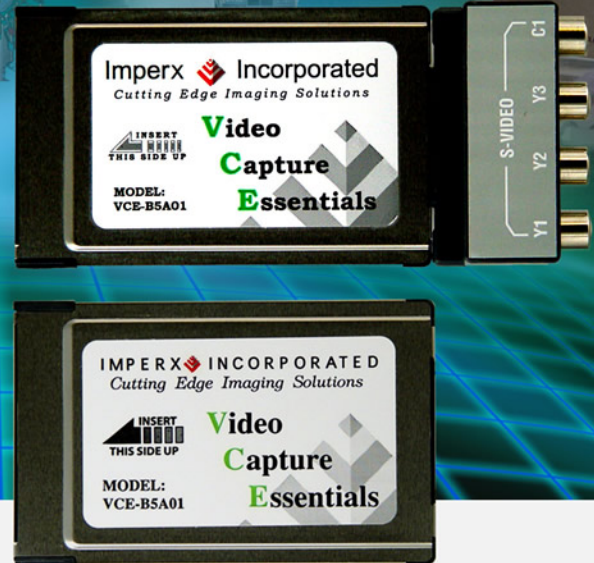


## ANALOG PCMCIA VIDEO CAPTURE CARD

VCE-B5A01  
VCE-B5A01-F



### Features

- PCMCIA PC Card interface
- Small form factor PCMCIA Type II
- Hot insertion and removal
- Supports Win 95, 98, ME, 2K, XP, CE
- Laptop and PDA compliant
- NTSC/PAL/RS170 compliant

With Imperx **PCMCIA frame grabbers**, applications and uses of portable and mobile vision systems become a reality. The **VCE-B5A01** supports any standard analog NTSC or PAL interfaces, and provides the functionality, performance and versatility required by today's most demanding vision systems. The card features plug-n-play operation with hot insertion and removal. A full software suite including drivers and application is provided. SDK available.

### Applications

- Industrial
  - Silicon wafer and PCB inspection
  - Machine vision
  - Document scanning
- Medical
  - Ultrasound
  - X-Ray, CT and MRI
- Security
  - Police in-car surveillance
  - Biometric identification
- Military
  - Aerial mapping/survey
  - Battlefield imaging
  - UAV, Robotic vision

MOBILITY...CONVENIENCE...PERFORMANCE...  
**PCMCIA FRAME GRABBERS**

# Specifications for VCE-B5A01

<b>Features</b>	PCMCIA 2.1/JEIDA 4.1 compliant, 16 bit PCcard interface, Laptop and PDA compliant Plug-and-play Hot insertion and removal Video capture rates: 5 fps to 25 fps Selectable window sizes Adjustable brightness, contrast, hue and saturation Captures single, multiple frames or AVI clips Normal or delay capture Date, time and text overlay BMP or adjustable JPEG file format Image viewer with DVR Controls 16-bit YCrCb (4:2:2) digital output
<b>Video Source</b>	2 Composite or 1 S Video inputs NTSC, PAL, SECAM and RS170 Auto NTSC/PAL format detection Automatic gain control
<b>Environmental</b>	Operating temperature: 0°C to 65°C Relative humidity: 90% non-condensing
<b>Mechanical</b>	PCMCIA Type II card VCE-B5A01 – 4.6" x 2.1" x 0.2", (116 x 54 x 5) mm VCE-B5A01-F – 3.3" x 2.1" x 0.2", (85 x 54 x 5) mm Weight 1.25 oz, (35 g)

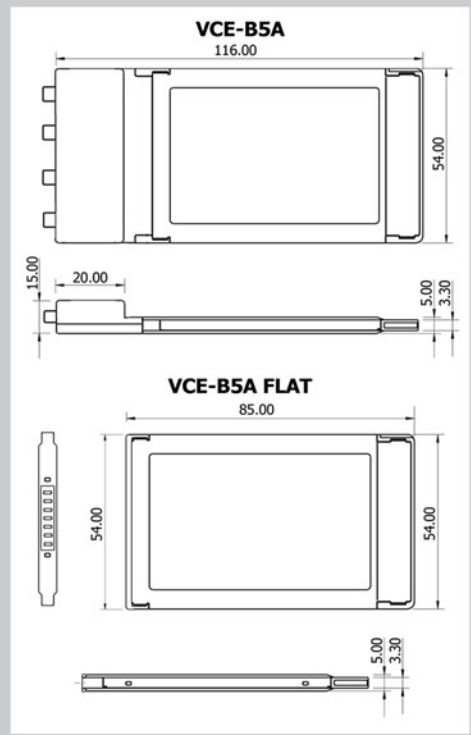
## Description

The VCE-B5A01 is a low cost, PCMCIA PCcard Video Capture Card, allowing users to display, capture, store, and preview video on their notebook computers. The VCE-B5A01 is capable of capturing single or multiple frames, and standard AVI clips from any NTSC, PAL or RS170 video source. A built in capture delay function enables users to program their card to record sequences of events at later dates and times. Each captured frame can be stamped with a user message along with the date and time of capture. A specially designed image viewer gives users the flexibility to view, scroll or step through the recorded images.

## Power Requirements

- 5.0V DC +/- 5%
- 200 mA steady, 650 mA inrush
- 1.0W constant power

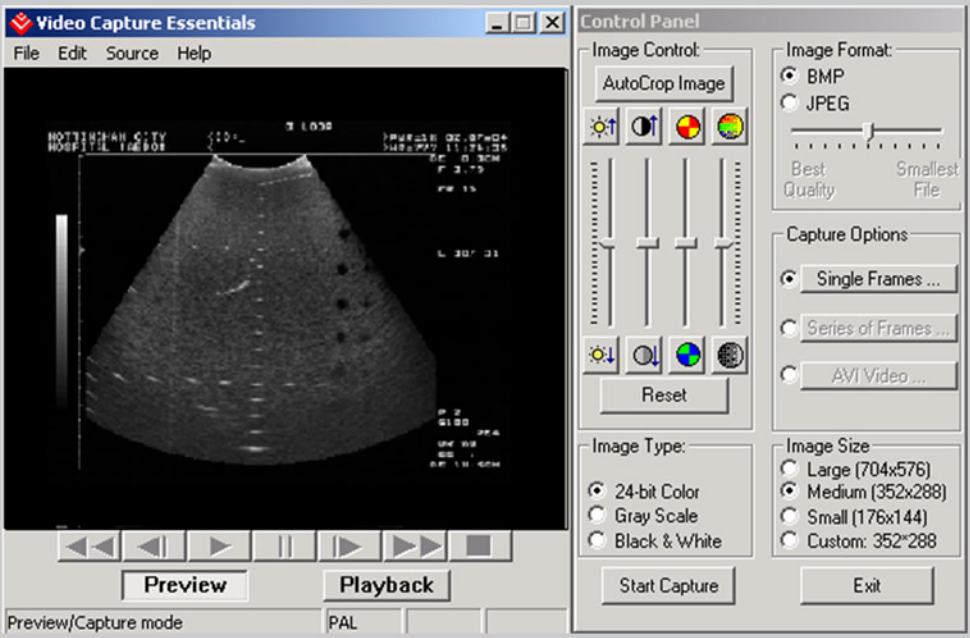
## Mechanical Dimensions



## Ordering Information

Ordering: <b>VCE-B5A01-CX</b>	
Card Type	User Cable
<b>blank</b> - Standard	<b>X</b> - Cable length (custom option only)
<b>F</b> - Flat	
<b>C</b> - Custom	

## Software



- Windows 95, 98, NT 4.0, CE, ME, 2000 and XP drivers
- Twain, VXD, WDM, DirectX, CE and LabView drivers
- DLL based SDK (C++, VB examples)
- Image viewer (GUI) application

For specific details and ordering information, consult the product user's manual or contact us at [sales@imperx.com](mailto:sales@imperx.com).

Copyright © 2004, Imperx, Inc. Product information subject to change without notice. Rev. 1.0, 11/08/04



Imperx Incorporated • 6421 Congress Avenue • Boca Raton, FL 33487 • USA  
 Phone: 1-561-989-0006 • 1-866-849-1662 • Fax: 1-561-989-0045  
[www.imperx.com](http://www.imperx.com) • [sales@imperx.com](mailto:sales@imperx.com)

