

Use the following steps to install the VCE Express software supplied on a CD. Note that 'click' refers to the left mouse button.

1. If a version of VCE Express was previously installed on this machine, then you must first remove it:

**To remove the application files:**

- 1.1 Click on "Start".
- 1.2 Click on "Settings".
- 1.3 Click on "Control Panel".
- 1.4 **For Windows XP:**  
Double click on "Add or Remove Programs".
- 1.4 **For Windows Vista and Windows 7:**  
Double click on "Programs and Features".
- 1.5 Click on "VCE Express".
- 1.6 Click on "Remove".
- 1.7 If the 'VCE Express Setup' pops-up then do the following:  
Click "Next".  
Click "Uninstall".  
Click "Finish".

2. After having removed a previous version or if a version of VCE Express was NOT previously installed on this machine then:

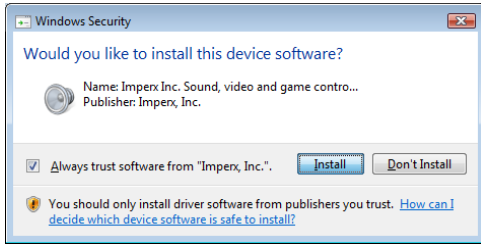
**The first step is to install the application files:**

- 2.1 Insert the VCE Express CD into the appropriate drive; the installation program will run automatically. Note: If it does not start automatically, click on "Start", "Run", enter or browse to "(CD drive): VCEEx\_Software\_x\_x\_x\_x.exe" and click "OK".
- 2.2 Wait for the "VCE Express Setup" screen to appear.
- 2.3 Follow the on-screen instructions.
- 2.4 For Windows XP click "Continue Anyway" to continue.

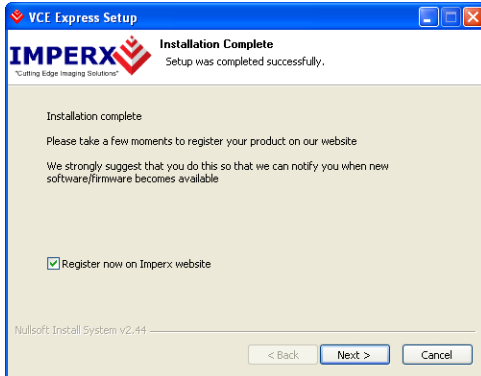


- 2.5 For Windows Vista and Windows 7, select "Always trust software from Imperx, Inc." and click on "Install" button, when the following message appears:





2.6 When the following message appears, choose if you would like to register online by clicking on “Register now on Imperx website”



2.7 Click “Next” and then “Finish”. This completes the software installation and reboots your computer.

**The next step is to install the driver files:**

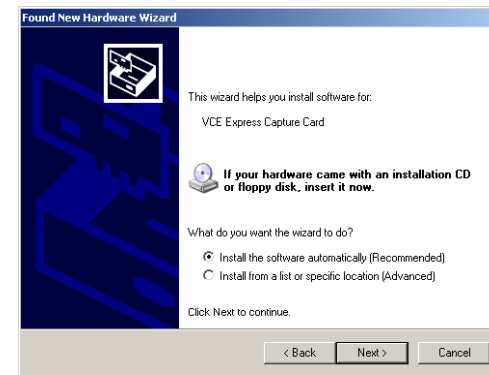
- 2.9 Insert the VCE Express card into the laptop.
- 2.10 For Windows XP:  
Wait for the system to prompt you with a “Found New Hardware Wizard” dialog box. Proceed to Step 2.11.
- For Windows Vista and Windows 7:  
The driver will automatically be installed. Proceed to Step 2.16.

2.11 Under certain conditions, the following message may appear:

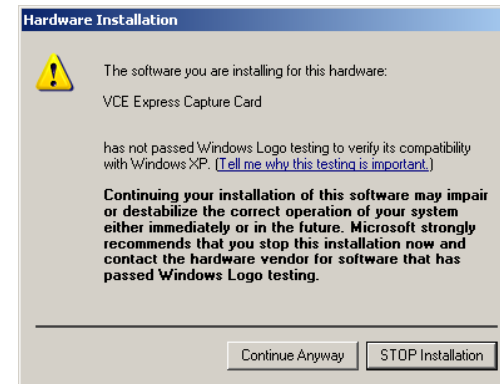


If this message appears, click “No, not this time”, then click “Next”.

2.12 When the following message appears, select “Install the software automatically (Recommended)”, then click “Next”.



2.13 The following message will appear:



- 2.14 Click “Continue Anyway” to continue.
- 2.15 When “Click finish to close the wizard” appears, click on “Finish”.
- 2.16 This completes the driver installation.

**For additional information and the latest updates and downloads, please visit our website at [www.imperx.com](http://www.imperx.com)**