



2.16 Left click “Next” to continue. The following message will appear:



Click “Yes” to continue.



- 2.17 Click “OK”, then either enter or browse to: C:\Program Files\ImperX\VCE-Pro\Drivers\WDM
- 2.18 Click “OK”.
- 2.19 This completes the installation for Windows 2000.

**For additional information and the latest updates and downloads, please visit our website at [www.imperx.com](http://www.imperx.com).**

Use the following steps to install the VCE-PRO software supplied on a CD:

1. If a version of VCE-PRO was previously installed on this machine, then you must first remove it:

**To remove the application files:**

- 1.1 Left mouse click on “Start”
- 1.2 Left mouse click on “Settings”.
- 1.3 Left mouse click on “Control Panel”.
- 1.4 Double left mouse click on “Add or Remove Programs”.
- 1.5 Left mouse click on “Video Capture Essentials – Professional”.
- 1.6 Left mouse click on “Remove”.
- 1.7 **If the ‘VCE-PRO – InstallShield Wizard’ pops-up, do the following:**  
**If not, go to step 1.8**  
 Left mouse click on ‘Remove’.  
 Click ‘Next’.  
 Click ‘Yes’.  
 Click ‘Finish’.
- 1.8 Left mouse click on “Yes”.
- 1.9 Left mouse click on “Close”.

2. After having removed a previous version or if a version of VCE-PRO was NOT previously installed on this machine then:

**The first step is to install the application files:**

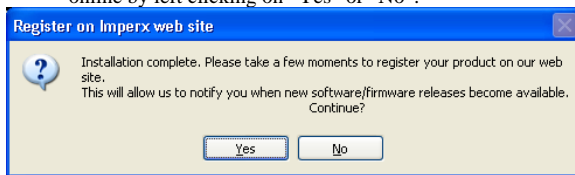
- 2.1 Insert the VCE-PRO CD into the appropriate drive; the setup.exe file will run automatically. Note: If it does not start automatically, left mouse click on to “Start”, “Run”, enter or browse to “(CD drive): setup.exe” and click “OK”.
- 2.2 Wait for the “VCE-PRO - InstallShield Wizard” screen to appear.
- 2.3 Follow the on-screen instructions.
- 2.4 For Windows XP, the following message will appear:



For Windows 2000, the following message will appear:



- 2.5 Click "Continue Anyway" for XP, "Yes" for 2000.
- 2.6 When the following message appears, choose if you would like to register online by left clicking on "Yes" or "No".



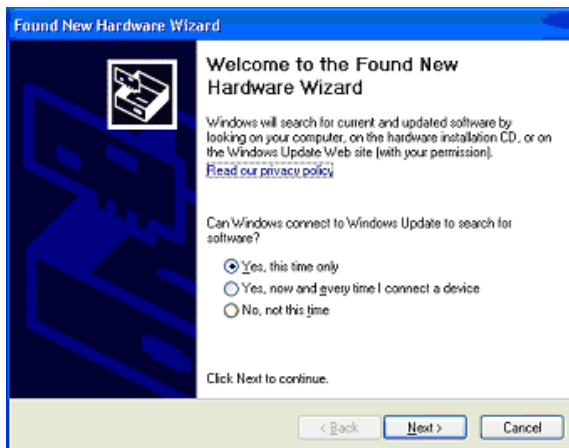
If you choose "Yes", follow the on-screen instructions.

- 2.7 When prompted, select "Yes, I will restart my computer now".

**After restarting the computer a New Hardware Found screen will come up: ( the VCE-PRO card must be installed to perform the following steps )**

Steps 2.8 through 2.14 are for Windows XP. For Windows 2000, go to Step 2.15

- 2.8 Wait for the system to prompt you with a "Found New Hardware Wizard" dialog box.
- 2.9 Under certain conditions, the following message may appear:



If this message appears, click "No, not this time", then "Next".

- 2.10 When the following message appears, select "Install the software automatically (Recommended)", then left click "Next".



- 2.11 For Windows XP, the following message will appear:



- 2.12 Click "Continue Anyway" to continue.
- 2.13 When "Click Finish to close the wizard" appears, Left click on "Finish".
- 2.14 This completes the installation for Windows XP.

**To install the WDM driver for Windows 2000:**

- 2.15 Wait for the system to prompt you with a "Found New Hardware Wizard" dialog box.